

Fine Jewellery & Watches, 18th Sep, 2025 11:00

1



AN EMERALD CUT AQUAMARINE AND DIAMOND ART DECO RING SET IN PLATINUM The 1.75ct octagonal cut aquamarine and diamond art deco ring in platinum, displaying a soft blue shade with six 0.03ct round brilliant cut diamonds set in pave, the diamonds amount to an overall weight of 0.18ct, no sign of a hallmark, stamped platinum, gross weight: 3.64g.
£460-560

2



A 9CT GOLD INTERLOCKING CELTIC LINK CHAIN The interlocking 9ct yellow gold chain in a Celtic design, 7.5" in length, full hallmark is clear, stamped 375, GA sponsor mark, assayed in Sheffield, gross weight: 8.24g.
£150-250

3



MURRLE BENNETT & CO. SPIDER PENDANT WITH PEARL AND TURQUOISE The intricate Murrle Bennet & Co. spider pendant with seed pearl and turquoise, stamped 9ct and MB, gross weight: 3.50g.
£400-600

4



A STERLING SILVER GUCCI TAG DOUBLE CHAIN PENDANT The Gucci tag pendant on a double ball chain, set in sterling silver, full hallmarks are visible, LT sponsor mark, assayed in London, stamped 925, 20" in length, gross weight: 24.45g.
£120-140

5



A PLATINUM, EMERALD AND DIAMOND ART DECO RING Featuring a stunning octagonal cut emerald, centred within a cluster of round brilliant diamonds and set in platinum, the emerald is approximately 3.52ct and the diamonds cumulatively weigh 0.60ct, colour G/H, clarity: VS1/VS2, stamped platinum, no hallmarks visible, size O, gross weight: 6.30g.
£1,500-1,600

6



TWO SRI LANKAN SILVER GILT KONDAKOORA HAIRPINS To include a pink sapphire and a topaz, with boteh and twisted wire decorations, to arrow shape ends, 10cm and 9cm (2).
£30-50

Fine Jewellery & Watches, 18th Sep, 2025 11:00

7



A GEM-SET SPRAY BROOCH BY SOLARGEM
The Almandine garnet and seed pearl spray, signed, stamped 9ct, length 5.4cm, gross weight 7g.
£60-120

10



AN OVAL CUT EMERALD AND DIAMOND CLUSTER RING SET IN PLATINUM Boasting a beautiful 0.90ct verdant emerald which is encompassed by a cluster of 10 diamonds equalling 1.20ct and set into platinum, no hallmark visible, stamped platinum, size N1/2, gross weight: 5.04g.
£1,300-1,400

8



A YELLOW SAPPHIRE AND DIAMOND ART DECO RING SET IN PLATINUM The oval cut 0.55ct yellow sapphire within a 24 diamond milgrain surround, amounting to 1.10ct overall and set into platinum, no hallmark visible, stamped platinum, size N, gross weight: 4.00g.
£750-850

11



A WWII CATERPILLAR CLUB PIN Of typical design, awarded to Flying Officer J. Cole, inscribed F/O. J. Cole to reverse, length 2cm, gross weight 0.9g.
The Caterpillar Club pin was an unofficial award, founded in 1922, and was presented to Royal Air Force personnel who had 'bailed out' successfully wearing an Irvin parachute made by the Irvin Air Chute Company, the recipient's name was engraved on the reverse.
£400-600

9



A 9CT GOLD AND ZIRCON SPRAY BROOCH
The 9ct gold floral brooch, peppered with striking blue zircons. Sponsor's marks LSL2, stamped 9ct, length 4.7cm, gross weight 6.3g.
£60-80

12



Fine Jewellery & Watches, 18th Sep, 2025 11:00

A 1960S ENAMEL AND DIAMOND BROOCH BY BEN ROSENFELD Of floral design, the single cut diamond cluster within five green enamelled petals and set in 18ct yellow gold, maker's marks for Ben Rosenfeld, hallmarks for London, 1967, length 3.8cm, gross weight 12.7g.
£500-700

13



A 9CT GOLD RUBY AND DIAMOND WREATH BROOCH The 9ct gold, ruby and diamond brooch in an attractive wreath design, length 2.5cm, hallmark clearly seen on the brooch pin, stamped 375, SJ sponsor mark, gross weight 4.5g.
£80-120

14



A SHELL CAMEO BROOCH The circular shell cameo depicting a classical figure and birds, within an unmarked yellow metal surround, length 4.9cm, gross weight 15g.
£80-120

15



A 2-TONE METAL AND DIAMOND BAR BROOCH The simple but effective diamond bar brooch assessed as 9ct, no hallmark or stamp, 5.5cm, gross weight: 3.55g.
£80-100

16



A CULTURED PEARL STICKPIN Unmarked and untested, gross weight 3.2g.
£30-50

17



A 3-ROW AKOYA PEARL BRACELET WITH A RUBY CLASP, SET IN 14CT ROSE GOLD The perfect example of uniformity, no hallmark visible, stamped 14k, gross weight: 34.90g.
£900-1,500

18



A 3.50CT MARQUISE AND ROUND BRILLIANT CUT DIAMOND TENNIS BRACELET, SET IN 18CT GOLD The 3.50ct diamond tennis bracelet with a sequence of alternating marquise and round brilliant cut stones, set in 18ct white gold, stamped 750, length: 8", gross weight: 10.98g.
£2,500-3,000

Fine Jewellery & Watches, 18th Sep, 2025 11:00

19



A DOUBLE ROW NECKLACE OF AKOYA PEARLS, SET IN 9CT WHITE GOLD The double row akoya pearl necklace with a round, vivid blue synthetic sapphire and white zircon cluster clasp, length: 16" and 18" respectively, stamped 9ct but no hallmark, gross weight: 53.21g.
£350-450

20



A GARNET AND DIAMOND 14CT GOLD AND SILVER TORTOISE BROOCH The en cabochon cut almandine/pyrope garnet and rose cut diamond tortoise brooch, set in 14ct gold and silver, the 28 diamonds set into the shell amount to approximately 0.60ct, unmarked, 3cm in length, gross weight: 4.29g.
£350-450

21



AN 18CT GOLD DOUBLE ROW BLOCK LINK BRACELET The hefty 18ct gold double block link bracelet, no hallmark visible but stamped 750, gross weight: 23.38g.
£900-1,000

22



A GUCCI ID BRACELET The Gucci sterling silver ID bracelet, correctly hallmarked, stamped 925, assayed in London, 7" in length, gross weight: 18.56g.
£80-120

23



AN 18CT GOLD AND DIAMOND INFINITY LINK BRACELET BY GOLDSMITHS The 18ct white gold and diamond infinity link bracelet which incorporates 6 larger centre stones and 144 accent stones, together amounting to 1.02ct, length: 7", hallmark is clear, assayed in London, sponsor Mark: AL, gross weight: 8.44g.
£500-700

24



A STERLING SILVER TIFFANY & CO. VENETIAN LINK BRACELET Characterised by its unique interlocking box chain style, it is known for its classic appearance and was originally inspired by ancient Roman arches, the remnants of a full hallmark are visible, stamped 925, 7" in length, gross weight: 15.26g.
£100-150

Fine Jewellery & Watches, 18th Sep, 2025 11:00

25



A STERLING SILVER TIFFANY & CO. INTERLOCKING DOUBLE BANGLE The Tiffany & Co. interlocking double bangle, as part of the "1837" collection, in sterling silver, no hallmark visible, stamped 925, 2.5" in diameter, gross weight: 39.91g.
£150-200

26



A 9CT GOLD CELTIC KNOT BRACELET With a floral sequence, a 9ct yellow gold interlocking bracelet with a Celtic knot design, length: 8", stamped 375, hallmark visible but unclear, sponsor mark: TJ, gross weight: 23.90g.
£500-700

27



A 9CT YELLOW GOLD HEAVY GAUGE CURB LINK BRACELET A 9ct yellow gold heavy gauge curb link bracelet, full hallmark visible on the central link, assayed in Birmingham, stamped 375, approximately 20.5cm long, total gross weight approximately 59.3g.
£1,100-1,200

28



EMERALD AND GOLD FIGURE OF EIGHT EARRING DROPS The pair of emerald figure of eight earring drops set in 9ct yellow gold, although described as drops, the earrings can also be worn as small studs for separate occasions, no hallmark or metal fineness stamp seen on the post or setting, 9ct engraved on the butterfly back, gross weight: 1.60g.
£200-250

29



DARK BLUE SAPPHIRE AND DIAMOND MODERN CLUSTER/ILLUSION DROP EARRINGS, SET IN 2-TONE 9CT GOLD Featuring a pear and round cut sapphire, accompanied by three diamonds within a modern cluster/illusion drop setting, the mount is composed of both 9ct white gold and 9ct yellow gold, correctly hallmarked and assayed in London, gross weight: 2.45g.
£200-400

30



Fine Jewellery & Watches, 18th Sep, 2025 11:00

A PAIR OF SAPPHIRE AND DIAMOND

CLUSTER STUDS IN 9CT GOLD The medium 0.60ct blue sapphire and 0.14ct diamond cluster studs, weighing in 9ct gold, stamped 375, gross weight: 2.08g.
£200-300

31



A PLATINUM AND DIAMOND WEDDING SET - WITH GIA CERTIFICATION

The perfect bridal set, boasting an exquisite 0.80ct cushion modified brilliant cut diamond with D colour and VS1 clarity within a rob-over setting, encompassed by 20 x 0.01ct round brilliant diamonds of similar quality to the centre stone, another 14 x 0.01ct diamonds encrust the shoulders of the shank and a further 13 x 0.01cts are situated underneath the "head", remnants of a full hallmark visible, XM sponsor mark, stamped 950, size J 1/2, GIA certification, gross weight: 6.52g.

Accompanied by a diamond and platinum full eternity ring, which fits perfectly underneath the modified setting of the engagement ring, it contains 40 x 0.01 diamonds, collectively weighing 0.40ct, no clear hallmark, size J 1/2, gross weight: 3.81g.

£2,500-3,500

32



A PAIR OF 18CT YELLOW GOLD RUBY AND DIAMOND STUD EARRINGS

A pair of 18ct yellow gold ruby and diamond stud earrings, each set with a single round cut diamond and oval cut ruby, approximately 9.5mm long, post and butterfly fittings, total gross weight approximately 2.1g.

£80-100

32A



A 1.30CT SYNTHETIC RUBY AND DIAMOND CLUSTER RING IN 18CT GOLD

The pigeon blood synthetic ruby surrounded by a cluster of 8 x 0.12ct diamonds, collectively weighing approximately 1.00ct and set into an 18ct yellow gold, full hallmark visible, MJJ sponsor mark, assayed in Birmingham, stamped 750, size S.
£500-800

33



A SELECTION OF IMITATION AND SPLIT PEARL JEWELLERY, TO INCLUDE A 9CT GOLD CHAIN, AF

To include:
The separated 9ct gold bracelet with a shield emblem, full hallmark visible, assayed in Birmingham, JG&S sponsor mark, stamped 375, 19cm in length, gross weight: 3.15g.

The 9ct and split pearl brooch, no hallmark visible, stamped "9ct", gross weight: 1.18g.

The pair of 9ct gold and imitation pearl drop earrings with a "huggie" fixture, no visible hallmark, stamped 9ct, gross weight: 1.17g.

The 9ct gold and imitation pearl necklace, no visible hallmark, stamped "9ct", 20cm in length, gross weight: 3.08g

£80-120

33A



Fine Jewellery & Watches, 18th Sep, 2025 11:00

AN 18CT YELLOW GOLD AND DIAMOND CIRCULAR LINK BRACELET The unique 18ct yellow gold flexible link bracelet, featuring 11 diamonds in intervals, collectively weighing 0.27ct. The style is known for its versatility and can be considered suitable for various occasions, the remnants of a hallmark is visible, stamped "750", gross weight: 18.86g.
£1,000-1,300

34



A 9CT GOLD OPEN HEART PENDANT The openwork heart pendant stamped 375 and suspended from an 18ct gold curb link chain, length of pendant 1.4cm, length of chain 44cm, gross weight 2.2g.
£50-100

34A



AN 18CT YELLOW GOLD AND DIAMOND COLLAR NECKLACE The unique 18ct yellow gold flexible link collar necklace which features 31 diamonds in a continuous line, collectively weighing 0.80ct. The style, similarly to the matching bracelet (Lot 33A), is known for its versatility and can be considered suitable for various occasions, the remnants of a hallmark is visible, stamped "750", gross weight: 45.64g.
£3,000-3,500

35



A CLEOPATRA COLLAR NECKLACE SET IN 9CT GOLD The flat and textured necklace with cascading segments, creating a fan-like pattern which resembles an ancient Egyptian broad collar necklace, a full clear hallmark is visible, NK sponsor mark, stamped 375, assayed in London, gross weight: 32.88g.
£600-800

36



A STERLING SILVER TIFFANY & CO. HEART TAG TOGGLE NECKLACE The heavy set Tiffany & Co. belcher link toggle necklace, no hallmark visible, stamped 925, 16" in length, gross weight: 75.52g.
£50-100

37



Fine Jewellery & Watches, 18th Sep, 2025 11:00

AN 18CT WHITE GOLD AND DIAMOND 3 STONE PENDANT The lovely diamond trilogy drop pendant designed in a stylised spiral or Helter Skelter arrangement, the stones graduate from large to small in descending order and the pendant is suspended from an 18ct white gold fine box chain. Ideal for everyday wear and for special occasions, hallmark visible even if unclear, assayed in London, stamped 750, 22cm in length, gross weight: 3.74g.

£800-1,000

38



A 9CT YELLOW GOLD GRADUATED CURB LINK WATCH CHAIN A 9ct yellow gold graduated curb link watch chain, with dog clip and t-bar, approximately 28.5cm long, total gross weight approximately 21.4g.

£400-500

39



A VICTORIAN YELLOW METAL OVAL LOCKET PENDANT Chased and engraved with foliate detail, beaded border, approximately 5.5cm long, unmarked, on a yellow metal belcher link chain (af), total gross weight approximately 31.2g; together with a yellow metal heart-shaped locket set with paste stones, approximately 2.4g, on a gilt metal chain.

£600-700

40



A 9CT YELLOW GOLD GRADUATED CURB LINK DOUBLE WATCH CHAIN A 9ct yellow gold graduated curb link double watch chain, with t-bar and medallion, hallmarked Birmingham 1925, approximately 34.5cm long, total gross weight approximately 47.7g.

£900-1,000

41



¶ MARILYN MONROE INTEREST - A 9CT YELLOW GOLD AND RHINESTONE PENDANT NECKLACE Marilyn Monroe interest - A 9ct yellow gold and rhinestone pendant necklace, total gross weight approximately 3.4g, together with paperwork and certificate stating the teardrop rhinestone was once part of a bracelet, purportedly belonging to Marilyn Monroe.

£50-100

42



A YELLOW METAL AND ENAMEL M.G.S PENDANT In a shield design and with torch logo, and text 'M.G.S Onwards and Upwards' unmarked, length 4.4cm, gross weight 11.5g.

£500-700

Fine Jewellery & Watches, 18th Sep, 2025 11:00

43



A 22CT GOLD FOX TAIL CHAIN The link chain with hook clasp, bearing initials GDJ and "22ct", no hallmark visible, length 50cm, gross weight 15.3g.

£1,000-2,000

44



A 19TH CENTURY INDIAN DIAMOND PENDANT The alluring 19th century diamond drop pendant from India, set with the principal pear shape diamond weighing approximately 3cts within an old cut diamond foliate surround, collectively weighing approximately 2.46ct for 41 stones, and suspended from a round old cut diamond weighing approximately 1.40cts within a similarly-cut diamond surround, consisting of 8 stones, and weighing approximately 1.20cts, assessed colour K-L, assessed clarity SI2-P1, length 7.3cm, gross weight 14.1g.

£4,000-6,000

45



FIVE 9CT GOLD GEM-SET PENDANTS A collection of five 9ct gold gem-set pendant necklaces, including diamond, ruby, emerald and amethyst, all stamped '375', various designs, total combined gross weight approximately 15.8g.

£300-400

46



A SILVER GILT AMETHYST AND BLUE LACE AGATE NECKLACE Three rows of beads suspending a rectangular pendant with further beaded drops and briolette cut amethyst, the amethyst produces a gorgeous alternating light to dark purple glow, which works so well alongside the subtle, marbled powder blue agate, Portuguese marks, length: approximately 18", gross weight: 99.31g.

£30-40

47



AN EARLY 20TH CENTURY GEM-SET SPIDER PENDANT With a garnet and split pearl abdomen and green gem eyes, suspended from a rolled gold trace link chain, length of pendant 4.3cm, gross weight of pendant 1.6g.

£50-70

48



Fine Jewellery & Watches, 18th Sep, 2025 11:00

A STERLING SILVER TIFFANY & CO.

PERETTI CROSS PENDANT Part of the Elsa Peretti collection and is described as having a "signature organic and fluid design", no visible hallmark, stamped 925, 16" in length, gross weight: 2.50g.

£80-120

49



THREE AMETHYST AND CULTURED PEARL NECKLACES Each strand designed as an alternating line of pearls and amethyst in varying shapes and sizes, lengths 47 to 51.5cm (3).

£70-90

51



A CITRINE PENDANT The oval shape citrine weighing approximately 30ct, within a four claw setting and tapered surmount, unmarked yellow metal setting, length 3.5cm, gross weight 7.7g.

£80-120

52



A TANZANITE AND DIAMOND PENDANT SET IN 18CT WHITE GOLD

The 0.60ct oval cut tanzanite with a brilliant cut 0.06ct diamond accent, suspended from a flat curb link chain, stamped 750, length of pendant 1.8cm, length of chain 41cm, gross weight 3.1g.

£200-400

53



A SELECTION OF CULTURED PEARL JEWELLERY

With various body colours and overtones, to include two single-strand cultured pearl necklaces with clasps stamped 14k, together with two pairs of stud earrings.

£40-60

54



A SET OF 22CT GOLD THEOSOPHICAL SOCIETY JEWELLERY To include a signet ring, stamped 22ct, and a pendant, dated 1914, gross weight 14.4g.

£900-1,400

55



Fine Jewellery & Watches, 18th Sep, 2025 11:00

AN 18CT YELLOW GOLD AND DIAMOND FIVE STONE RING Set with graduated round brilliant cut diamonds, estimated total diamond weight approximately 0.50ct, ring size H, total gross weight approximately 3.4g.
£150-200

56



AN 18CT GOLD STAMP RING Heralding a griffon itaglio on an 18ct gold signet ring, hallmarks are clear, stamped 750 and assayed in London, size: O1/2, gross weight: 8.29g.
£300-350

59



TWO 18CT YELLOW GOLD GEM-SET RINGS Including a diamond three stone ring with white and yellow crossover shoulders, diamond weight stamped to shank 0.34ct, ring size N, total gross weight approximately 2.8g; together with a diamond, ruby and sapphire ring, size N, total gross weight approximately 4.5g (2).
£300-400

57



A 22CT GOLD WEDDING BAND The 3mm wide 22ct gold wedding band with full, clear hallmarks, assayed in Birmingham, size M, gross weight: 5.62g.
£250-300

59A



THREE 9CT GOLD GEM-SET DRESS RINGS Including sapphire, diamond and blue topaz, each stamped '375', sizes L1/2 - N, total combined gross weight approximately 9.4g.
£150-200

58



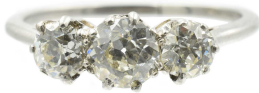
A 9CT YELLOW GOLD WEDDING BAND The 5mm wide 9ct gold wedding band, a full visible hallmark, B&N sponsor mark, assayed in Sheffield, stamped 375, size T, gross weight: 5.78g.
£110-150

60



A 22CT GOLD WEDDING BAND A 3mm wide 22ct gold wedding band with full, clear hallmarks, assayed in London, size P, gross weight: 4.58g.
£200-250

61



A 1.15CT DIAMOND AND PLATINUM TRILOGY RING The diamond and platinum trilogy ring is comprised of three old European cut diamonds with their culet fashioned into an extra facet, the centre stone weighs approximately 0.55ct and the two smaller stones weigh 0.30ct each, with an overall colour and clarity of I/J and SI1/SI2, the stones are set into a platinum claw setting and stamped 950, although unclear, there are remnants of a hallmark, ring size: P, gross weight: 3.11g.
£400-500

62



A COLLECTION OF FIVE 9CT GOLD RINGS OF VARYING STONES AND CONDITION To include:
A blue treated topaz cocktail ring set in 9kt yellow gold, size N, weighing: 2.84g. A treated sapphire trilogy ring set in 9ct gold, size Q, weighing: 2.08g. A garnet set engraved ring in 9ct gold, size P, weighing: 2.53g. An amethyst illusion set ring in 9ct gold, size N, weighing: 1.59g and a split 9ct gold wedding band, weighing: 3.52g, all with readable hallmarks and assayed in either London or Birmingham.
£250-300

63



AN AGATE INTAGLIO RING SET IN 18CT GOLD The shield shaped agate intaglio with tapered shoulders, stamped 18ct, ring size H, gross weight 4.2g.
£150-250

64



A 9CT YELLOW GOLD CUBIC ZIRCONIA SET HALF HOOP RING With round and baguette cut stones, ring size O, hallmarks clearly visible, total gross weight approximately 2.6g.
£30-50

65



AN AMETHYST AND SEED PEARL RING The round cut amethyst with seed pearl shoulders, stamped 9ct, ring size M, gross weight 2.4g.
£30-50

66



A RUBY AND DIAMOND THREE STONE RING, SET IN GOLD The ruby and diamond three stone ring, with a prominent pink/red ruby, unhallmarked, stamped 18ct, ring size L, gross weight 2.6g.
£80-120

69



A VINTAGE RUBY AND DIAMOND CLUSTER RING Set in rose metal, the ruby has a nice warm colour, and is encompassed by eight hand-cut diamonds, unmarked, ring size N, gross weight 2.6g.
£60-80

67



A 9CT GOLD DIAMOND CLUSTER RING Of floral design, the brilliant cut diamond cluster with similarly cut diamond sides, hallmarks for Birmingham, ring size Q1/2, gross weight 3.4g.
£80-120

70



AN 18CT GOLD WELLENDORFF 'BLUEBERRY' DIAMOND AND ENAMEL SPINNING BAND RING, RETAILED BY BOODLES Designed with a grey enamel spinning band detailed with blue floral detailing and diamond accents, together with a diamond spinning band, each encased within a principal grooved band, estimated total diamond weight 0.55ct, maker's 'W', serial no. 0180G0063E, sponsor's marks for Boodles, hallmarks for London, 2006, ring size M, gross weight 16g, with Boodles box.
£2,000-4,000

68



AN AMETHYST AND SPLIT PEARL PENDANT The oval cut amethyst within a halo of amethyst and split pearl surround, length 6.3cm, gross weight 10.2g.
£200-300

70A



Fine Jewellery & Watches, 18th Sep, 2025 11:00

TIFFANY&CO PLATINUM AND DIAMOND DISK PENDANT, ELSA PERRETTI COLLECTION

The Limited edition platinum disk pendant suspended on a fine platinum chain, by Tiffany&Co as part of the Elsa Peretti collection, featuring a diamond embellishment creating a pave effect, the remaining parts of the disk are smooth to the touch and reflective. Elsa Peretti is renowned for her organic and sculptured forms of jewellery, no hallmark seen, although a 950 stamp is visible alongside "Elsa Peretti" and "Tiffany&Co", 50cm in length, gross weight: 16.34g.

£3,000-3,500

71



A TANZANITE SINGLE STONE RING SET IN 18CT WHITE GOLD Featuring a 1.40ct oval cut tanzanite within a 18ct gold four claw setting, stamped 750, ring size O, gross weight 3.4g.

£120-220

72



AN AMETHYST AND DIAMOND RING SET IN PLATINUM The oval amethyst weighing approximately 2.20ct set alongside 10 small round brilliant cut diamonds weighing 0.18ct, and mounted into a "leaf-style" platinum rubover/milgrain setting, stamped PLAT, faded hallmark, size O, gross weight: 4.02g.

£450-550

73



A 1.75CT DIAMOND SOLITAIRE RING SET IN 18CT GOLD

The scintillating 1.75ct diamond solitaire ring set in 18ct white gold, a truly beautiful stone, cut to the correct proportions and exhibiting an ideal balance of brilliance and fire, the colour is consistent of G/H and possesses a clarity grade of VS1 - VS2, with only a few pin points, needles and a feather seen under x10 magnification, size O, a full clear hallmark is visible, assayed in London, stamped 750, gross weight: 3.51g.

£4,000-6,000

74



A DIAMOND AND GOLD BUCKLE RING The heavy set belt & buckle style ring, set in 18ct gold and featuring a 0.20ct round old European cut diamond, full hallmark visible, DLD sponsor mark, assayed in Birmingham, stamped 750, gross weight: 8.72g.

£400-600

75



Fine Jewellery & Watches, 18th Sep, 2025 11:00

A DIAMOND AND GOLD SOLITAIRE RING

Featuring a round 0.40ct old European cut diamond within an 18ct gold solitaire style with tapered shoulders, a nice clear hallmark is visible, assayed in London, stamped 750. Size P, gross weight: 4.09g.

£350-450

78



76



A DIAMOND AND GOLD 3 STONE RING Fixed within an 18ct gold illusion setting, fully hallmarked, assayed in Birmingham, stamped 18ct, size N 1/2, gross weight: 1.95g.

£100-150

79

A 7-STONE DIAMOND AND GOLD HALF

ETERNITY RING A timeless style, the half eternity ring, featuring 7 claw set diamonds of equal grades and weight, fixed into an 18ct ring, each diamond has an approximate weight of 0.13ct, accumulatively weighing 0.91ct, and averaging H/I colour and SI1-SI2 clarity, no hallmark visible, however, gold hallmarked was not regulatory until 1973, WJS sponsor mark, stamped 750, size M, gross weight: 4.13g.

£450-550



AN OVAL CUT TANZANITE AND DIAMOND 3 STONE RING SET IN PLATINUM Showcasing a vibrant 3.60ct tanzanite that exhibits blue and purple hues, and is accentuated by two 0.40ct diamonds either side, colour: J/K clarity: VS1, hallmark visible, assayed in London, gross weight: 6.64g.

£1,600-1,700

77



A 5 STONE DIAMOND AND 18CT GOLD RING

Set in a rubover, milgrain setting, all stones are cut as round brilliant, with the exception of one, which is an old European cut, full clear hallmark visible, assayed in Birmingham, EWS sponsor mark, stamped 18ct, size P1/2, gross weight: 2.93g.

£300-400

80



AN 18CT YELLOW GOLD AND DIAMOND

RING The 2.5mm wide 5-stone eternity ring, set in 18ct yellow gold, full hallmark visible, assayed in London, DP sponsor mark, stamped 750, size N, gross weight: 3.38g.

£150-200

81



A STERLING SILVER GUCCI G RING Of hefty weight, a full hallmark is visible, GI sponsor mark, assayed in London, stamped 925, size O, gross weight: 14.30g.
£80-120

82



A STERLING SILVER 1837 TIFFANY & CO. RING Of the "1837" collection, this collection was released in 1997, the ring is characterised by having a sleek, curved design, it is composed of sterling silver and is stamped appropriately, no hallmark visible, size O, gross weight: 7.50g.
£50-70

83



AN 18CT GOLD WEDDING BAND The 3.5mm wide 18ct yellow gold wedding band, no full hallmark, assayed in Birmingham, DP sponsor mark, size N, gross weight: 4.58g.
£180-220

84



A TOURMALINE AND DIAMOND RING SET IN 18CT GOLD The 3.50ct emerald cut tourmaline and diamond ring set in 18ct gold, clear hallmarks, stamped 750, assayed in Sheffield, S&M sponsor mark, size P, gross weight: 4.99g.
£300-450

85



A LARGE URANIUM GLASS COCKTAIL RING SET IN YELLOW METAL The pink oval cut 42ct uranium glass, fixed into a yellow metal setting (previously appraised as 14ct gold), no hallmark, 14ct stamp visible although hidden, size Q, gross weight: 18.44g.
£80-120

86



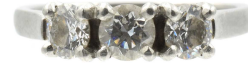
AN 18CT GOLD AND DIAMOND WEDDING BAND The 18ct White gold band with a single 0.02ct diamond, no hallmark visible, stamped 750, DP sponsor mark, size N, gross weight: 5.82g.
£250-300

87



A DIAMOND AND GOLD CLUSTER RING The ring possesses a cluster of 19 round brilliant cut diamonds which subtly increase in weight as you get closer to the centre and have an approximate accumulative weight of 0.78ct, the remnants of a hallmark are visible although unclear, stamped 375, size N, gross weight: 3.18g.
£300-350

90



A DIAMOND AND PLATINUM 3-STONE RING The 1.00ct round brilliant cut diamond and platinum trilogy ring, all three claw-set diamonds are of equal weight and grades, consisting of: 0.33ct, F/G colour, SI1 clarity, full clear hallmark, stamped 950, HM hallmark, assayed in Birmingham, size P, gross weight: 4.90g.
£800-1,100

88



A 25CT SYNTHETIC COLOUR-CHANGE SAPPHIRE RING Boasting a large 25ct synthetic colour change sapphire, set in a 9ct gold, 6-claw, stylised setting, full hallmark visible, assayed in London, stamped 375, size Q, gross weight: 7.00g.
£200-250

91



A PLATINUM WEDDING BAND The 5mm wide platinum wedding band, full clear hallmarks, HM sponsor mark, stamped 950, size P, gross weight: 7.09g.
£100-150

89



A 9CT GOLD SEED PEARL BROOCH The seed pearl brooch, set in a combination of 9ct yellow and white gold, with a dendritic design, full hallmark visible, assayed in Birmingham, stamped 375, gross weight: 6.18g.
£150-200

91A



AN 18CT WHITE GOLD WEDDING BAND The 4mm wide 18ct white gold wedding band, a full visible hallmark, assayed in Sheffield, EMF sponsor mark, stamped 750, size T 1/2, gross weight: 6.72g.
£250-300

Fine Jewellery & Watches, 18th Sep, 2025 11:00

92



A DIAMOND TWIST SOLITAIRE RING SET IN WHITE GOLD The 0.25 diamond twist solitaire ring set in 18ct white gold, full clear hallmarks, ST sponsor mark, assayed in London, stamped 750, size N, gross weight: 2.83g.
£250-350

92A

93A



AN 18CT WHITE GOLD WEDDING BAND The 2mm wide 18ct white gold wedding band, a full hallmark visible, EMF sponsor mark, assayed in Sheffield, stamped 750, size L1/2, gross weight: 1.94g.
£80-100

94



AN 18CT WHITE GOLD AND DIAMOND SOLITAIRE RING Featuring an approximate 0.30ct diamond within a simple 18ct white gold 4-claw setting, a full hallmark is visible, JID sponsor mark, assayed in Sheffield, stamped 750, size N1/2, gross weight: 2.59g.
£350-450

93



AN EMERALD AND GOLD RING The 0.24ct octagonal cut emerald set into an 18ct yellow gold rubover setting, the stone displays a lovely, saturated mint green colour and is nicely secured and protected by the ring's surround setting, no hallmarks visible, stamped 18ct, size P, gross weight: 2.40g.
£200-250

95



AN 18CT WHITE GOLD WEDDING BAND The 4mm wide 18ct white gold wedding band, full and clear hallmark, assayed in Sheffield, MLTD sponsor mark, size P, gross weight: 4.28g.
£150-170



A VICTORIAN DIAMOND AND PLATINUM BOAT RING The beautiful Victorian platinum boat ring in a claw and milgrain setting, with 11 diamonds, equalling 0.50ct, colour: J/K, clarity: SI1-SI2, all stones are uniform in their quality grades, size O, stamped Platinum, gross weight: 3.20g.
£500-600

Fine Jewellery & Watches, 18th Sep, 2025 11:00

96



AN OVAL CUT 2.00CT SAPPHIRE AND DIAMOND CLUSTER RING SET IN 18CT GOLD That showcases a deep, well-saturated 2.00ct sapphire enclosed within a floral halo of 10 diamonds, amounting to 1.20ct, the diamonds have a quality grade of F-G Colour and VS1 clarity and are mounted into an 18ct gold setting, stamped 750, gross weight: 5.95g.
£2,500-3,000

99



AN 18CT GOLD AND DIAMOND HALF ETERNITY RING BY ERNEST JONES This unique style consists of a central row of 11 stunning princess cut diamonds, encased in a surround of 48 melee diamonds equalling 1.00ct, and set into a hefty 18ct gold half eternity ring, there are clear hallmarks showing: London assay, 750 stamp and SG sponsor mark, gross weight: 4.73g.
£500-600

A SYNTHETIC SAPPHIRE AND DIAMOND DROP PENDANT SET IN 9CT GOLD The synthetic sapphire and diamond pendant suspended from a 9ct gold belcher chain, measuring 20", the piece is suitably hallmarked, assayed in Birmingham, gross weight: 3.72g.
£200-250

97



100



A ROUND CUT 2.29CT RUBY AND DIAMOND RING BY BOODLES & DUNTHORNE Featuring a stunning 2.29ct unheated Ruby from Myanmar alongside 6 trapezoidal cut diamonds with F colour and VS1 clarity, between them amounting to 0.80ct, set in 18ct yellow gold, gross weight: 6.5g.
£3,000-4,000

A PAIR OF SAPPHIRE MODERN DROP EARRINGS, SET IN 9CT GOLD The 5-stone modern drop sapphire earrings set in 9ct gold, assayed in Birmingham, gross weight: 2.0g.
£200-300

98



101



Fine Jewellery & Watches, 18th Sep, 2025 11:00

A ROUND CUT 0.90CT DIAMOND AND PLATINUM TWIST SOLITAIRE RING Featuring a stunning 0.90ct round brilliant cut diamond centre stone, set into a platinum twist style ring and accompanied by 60 accent stones equaling 0.30ct, the centre stone has a colour grade of G and a clarity grade of SI1, stamped Beaverbrooks, size O1/2, gross weight: 5.55g.
£3,000-3,500

104



102



A SAPPHIRE AND DIAMOND CLUSTER RING, The 1.00ct sapphire and diamond cluster ring, the circular shape sapphire within a brilliant cut diamond surround, estimated total diamond weight 0.30ct, stamped 18ct, ring size L, gross weight 3.4g.
£300-500

105

A DIAMOND AND GOLD DAISY CLUSTER RING Of floral design, the attractive 9 diamond cluster ring in a claw/bezel setting and set in 18ct yellow and white gold, overall diamond weight: 1.00ct, no hallmark visible, stamped 18ct, gross weight: 3.28g.
£1,100-1,200



103



AN 18CT YELLOW GOLD WEDDING BAND Approximately 3mm wide, ring size N1/2, total gross weight approximately 4.4g, London import mark.
£150-250

106

AN 18CT GOLD AND DIAMOND SINGLE STONE RING BY BOODLE & DUNTHORNE. The brilliant cut diamond weighing approx. 0.30ct within a six claw setting, estimated colour J-K, estimated clarity P2, maker's marks B&D for Boodle & Dunthorne, stamped 18ct, ring size O, gross weight 2.1g.
£100-200



AN 18K YELLOW GOLD AND DIAMOND ILLUSION CLUSTER RING Set with five illusion clusters, diamond weight stamped to shank '0.25ct', Birmingham import marks, stamped '750' and '18k', ring size N, gross weight approximately 3.8g.
£150-250

107



A 14CT GOLD RUBY AND DIAMOND DRESS RING The circular shape ruby trio within a single cut diamond surround, hallmarks for Birmingham, ring size S, gross weight 3.5g.
£70-90

110



AN EDWARDIAN STYLE YELLOW METAL RUBY AND DIAMOND NAVETTE RING Set with two oval mixed cut rubies and old cut diamonds, stamped 18ct, ring size Q, total gross weight approximately 3.8g.
£200-300

108



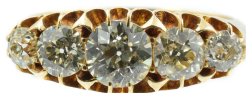
AN 18CT YELLOW GOLD AND DIAMOND FIVE STONE RING The 18ct yellow gold and diamond five stone ring, with round brilliant cut diamonds set into the band, total weight approximately 0.10ct, ring size M, assayed in London, total gross weight approximately 4g.
£150-200

111



A GROUP OF FOUR RINGS AND A BROOCH To include a yellow metal and onyx ring, the rectangular onyx plaque applied with gold initial 'L', stamped 9ct, ring size O, gross weight approximately 1.8g; together with a rose metal wedding band, stamped '333', ring size W1/2, gross weight approximately 4.1g; a rolled gold and paste three stone ring, ring size K; a silver claddagh ring; and an Edwardian 9ct yellow gold bar brooch with foliate and beaded design, approximately 5cm long, Chester 1902, gross weight including steel pin approximately 2.9g (5).
£120-150

109



A VICTORIAN 18CT YELLOW GOLD AND DIAMOND FIVE STONE RING Set with five graduated round old cut diamonds, estimated total diamond weight approximately 1.5cts, hallmarked Birmingham 1898, ring size O, total gross weight approximately 5.00g.
£500-800

112



Fine Jewellery & Watches, 18th Sep, 2025 11:00

A 9CT YELLOW GOLD AND GARNET SINGLE STONE RING A gentleman's 9ct yellow gold and rhodolite garnet single stone ring, the oval mixed cut stone in claw settings, ring size V1/2, hallmarked Chester 1909, total gross weight approximately 3.9g.
£70-90

113



A YELLOW METAL DIAMOND AND SYNTHETIC SAPPHIRE DRESS RING The oval mixed cut synthetic blue sapphire flanked by six round brilliant cut diamonds in white metal settings, yellow metal shank stamped '750', ring size W, total gross weight approximately 9.1g.
£350-400

116



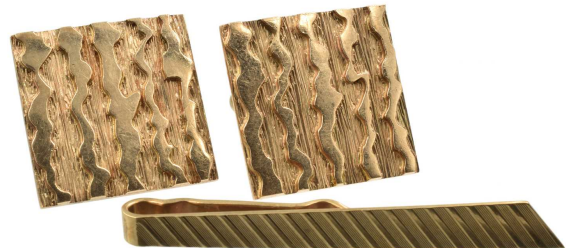
A 9CT YELLOW GOLD AND SMOKY QUARTZ COCKTAIL RING The large oval mixed cut stone approximately 28ct in openwork claw mount, hallmarked London 1976, ring size Q, total gross weight approximately 10.7g.
£100-150

114



A PAIR OF 9CT GOLD CUFFLINKS Boxed, full clear hallmarks, assayed in Birmingham, stamped 375, 2011 date stamp, gross weight 4.40g.
£50-100

117



AN 18CT GOLD AND DIAMOND SINGLE STONE RING The 18ct gold and diamond single stone ring, claw set with an old cut diamond, approximately 0.25ct, ring size V, stamped 18ct, total gross weight approximately 5.7g.
£250-300

115



A PAIR OF 9CT GOLD CUFFLINKS AND A TIE SLIDE The bark engraving has been indented into the metal and contrasts with the smooth "outer layer" of the cufflinks, no hallmarks visible, stamped 9ct, WB&CO sponsor mark, 2.3cm in length, gross weight: 21.55g. The tie clip is designed with a diagonally fluted pattern and is broader on the bottom than it is on top, a full hallmark is visible, PPLD sponsor mark, assayed in Birmingham, stamped 375, 5.2cm in length, gross weight: 3.92g.
£200-300

Fine Jewellery & Watches, 18th Sep, 2025 11:00

118



A PAIR OF 18CT GOLD CUFFLINKS

RETAILED BY HARRODS The distinctive torpede-shaped 18ct gold cufflinks from Harrods are connected by a flexible belcher chain (approx. 2cm) allowing for movement and ease of use, the style is commonly seen in vintage pieces, often from the Victorian or Edwardian eras, no full hallmark visible on either cufflink, stamped 18ct and "HARRODS", gross weight: 7.41g.

£150-250

119



A PAIR OF 9CT GOLD CUFFLINKS WITH BLUE ENAMEL DETAILING

The alternating blue enamel and 9ct gold oval shaped cufflinks joined by a 2cm belcher chain, the enamelling possesses a deep inky shade that shimmers when in contact with light, no visible hallmark, stamped "9ct", gross weight: 6.16g.

£50-100

120



A SELECTION OF VARIOUS PIECES OF

COSTUME JEWELLERY Assorted, to include:

The white metal stylised necklace, 24cm in length, gross weight: 31.99g.

The triple row cultivated freshwater pearl necklace with brass screw clasp, 24cm in length, gross weight: 20.48g.

The silver theosophical brooch, full hallmark visible, D&S sponsor mark, assayed in Birmingham, gross weight: 4.12g.

The purple and colourless paste cluster pendant, set in base metal, 24cm in length, gross weight: 3.59g.

The imitation pearl and gold metal pin brooch, 8.5cm in length, gross weight: 10.32g

The imitation pearl, green paste and yellow metal bangle, approximately 5.5cm in diameter, gross weight: 16.44g

The pair of silver cufflinks, incorporating a coin design originating from Hyderabad, India, gross weight: 6.03g

£20-40

121



Fine Jewellery & Watches, 18th Sep, 2025 11:00

A SELECTION OF COSTUME JEWELLERY A selection of plated base metal costume jewellery and accessories, to include:

- 1: Double row imitation pearl necklace
 - 2: A heavy set reflective necklace
 - 3: A copper coloured maple leaf brooch
 - 4: A woven necklace of yellow metal with set stones of paste
 - 5: A woven bangle bracelet from M&S
 - 6: 2 textured brooches of yellow metal
 - 7: Imitation pearl and yellow metal brooch
 - 8: A yellow metal double curb necklace
 - 9: Paste and white metal star-shaped earring drops
 - 10: Mother of pearl cufflinks and tie clip encased in resin
 - 11: Studded cufflinks
 - 12: A 2-tone "N" initial key ring
 - 13: A pair of gold-plated silver cufflinks with a diamond-shaped pattern
 - 14: 9ct rolled gold tie clip and another gold colour tie clip.
 - 15: A ladies gold toned Seiko watch
 - 16: A ladies Uno watch , white dial, yellow metal case, black leather strap
 - 17: G de S yellow metal watch in box
 - 18: 2 tone Seiko Lassale watch in box
- £40-60**

122



A YELLOW METAL AND DIAMOND SOLITAIRE RING The round brilliant cut diamond approximately 0.20ct, stamped '18ct', ring size N1/2, total gross weight approximately 2.4g; together with two cultured pearl necklaces, one with a 9ct yellow gold clasp, in a Mikimoto box (3).
£100-200

123



A YELLOW METAL, GREEN PASTE AND SEED PEARL PENDANT A yellow metal, green paste and seed pearl pendant, together with a carnelian seal, unmarked, gross weight 6.8g.
£100-200

124



A 1920S 9CT GOLD CIGARETTE CASE BY DEAKIN & FRANCIS. Deakin & Francis, Birmingham, 1928, gross weight 95.25g.
£1,800-2,200

125



A STAINLESS STEEL BREITLING FOR BENTLEY AUTOMATIC CALENDAR CHRONOMETER WRISTWATCH, REF. A13363. The maker's signed green metallic dial with baton markers, day and date aperture to 3, and subsidiary dials to 6 9 and 12, automatic movement within a stainless steel case numbered 2090882, to the green leather strap with maker's signed buckle, case diameter 46mm. With maker's box.
£2,500-3,000

Fine Jewellery & Watches, 18th Sep, 2025 11:00

126



A 1970S OMEGA ELECTRONIC F300HZ CHRONOMETER WRISTWATCH. The signed gold tone dial with baton hour markers, outer minutes track and date aperture to 3, signed movement within a gold plated and stainless steel case, with leather strap and maker's buckle, case diameter 38mm. With maker's travel case.
£250-400

128



A 1970S OMEGA CONSTELLATION CHRONOMETER QUARTZ WRISTWATCH, REF. 1980117. The signed gold tone dial with baton markers, outer minutes track and date aperture to 3, signed cal. 1343 7 jewel quartz movement within a stainless steel and gold case numbered 3980852, with maker's bracelet and push piece clasp, case diameter 35mm. With maker's box and spare link.
£150-200

127



A STAINLESS STEEL ROLEX OYSTER PERPETUAL DATEJUST WRISTWATCH Circa 2002, the circular signed blue dial with baton markers, outer minutes track and date aperture to 3, with polished bezel and oyster bracelet, Y83****, case diameter 36mm. With box, papers and tags. The model is known for its classic and elegant look and features the iconic oyster case (ensuring water resistance).
Reference number: 73860
model number: 16200
Case material: Stainless steel
movement/calibre: 2238
Dial: Blue
case diameter: 36mm
£2,000-4,000

129



A GUCCI QUARTZ WRISTWATCH The Gucci quartz wristwatch, ref 7900M.1, the signed square shape dial with baton and Roman numeral markers, date aperture to 6, within a stainless steel case with bracelet and double folding clasp, case no. 0027543, case width 33mm.
£30-50

130



Fine Jewellery & Watches, 18th Sep, 2025 11:00

THREE WATCHES Three watches, to include a silver cased 'Stayte C' wristwatch, a stainless steel Smiths Deluxe wristwatch, and a stainless steel Smiths cocktail watch, case diameters 29 to 13mm.

£30-50

131



A SELECTION OF WATCHES AND POCKET WATCHES A selection of watches and pocket watches, to include 2 silver open face pocket watches, an Ingersoll 17 jewel manual wind wristwatch and a stainless steel Mimo manual wind watch, both with champagne dials and gold coloured hands and numbers, a stainless steel Bentina quartz watch with flexible bracelet, a stainless steel quartz watch and an additional Ingersoll pocket watch (7).

£40-60

132



AN 18CT GOLD 'EAST INDIA LEVER' MANUAL WIND WRISTWATCH. Movement unmarked, Swiss assay marks, gross weight 15.2g.

£150-250

133



A 9CT GOLD OPEN FACED POCKET WATCH

White enamelled dial with Roman numerals, subsidiary seconds and blued hands, plain polished 9ct Dennison yellow gold case, hallmarked to rear and dust cover, stem and bow, Birmingham 1928 with sponsor's mark A.L.D., Swiss 17 jewel lever movement, case diameter 53mm, gross weight 95.5g.

£600-800

134



A 9CT GOLD FULL HUNTER WALTHAM POCKET WATCH

White enamelled dial with Roman numerals, subsidiary seconds and blued hands, plain polished 9ct Dennison 'Special' yellow gold case, hallmarked to front, rear and dust covers, stem and bow, Birmingham 1925 with sponsor's mark A.L.D., Swiss 17 jewel lever movement, case diameter 50mm, gross weight 94.2g.

£800-1,000

135



A 9CT GOLD FULL HUNTER POCKET WATCH

White enamelled dial with Roman numerals, subsidiary seconds and blued hands, plain polished 9ct Dennison 'Special' yellow gold case, hallmarked to front, rear and dust covers, stem and bow, Birmingham 1935 with sponsor's mark A.L.D., Swiss 17 jewel lever movement, case diameter 50mm, gross weight 88.3g.

£800-1,000

Fine Jewellery & Watches, 18th Sep, 2025 11:00

136



A 9CT GOLD HALF HUNTER POCKET WATCH

WITH CHAIN AND FOB Outer cover with blue enamel Roman numerals and inner chemin de fer chapter ring around the circular glazed aperture, white enamelled dial with Roman numerals, subsidiary seconds and blued hands, plain polished 9ct Dennison 'Special' yellow gold case, hallmarked to front, rear and dust covers, stem and bow, Birmingham 1924 with sponsor's mark A.L.D., with presentation engraving on dust cover to P.C. Kellett by the inhabitants of Bagnall, as a mark of esteem respect on the occasion of his retirement after 14 years active service and residence in the Parish 28th May 1925, Swiss 17 jewel lever movement, case diameter 50mm, gross weight 97.6g, with 9ct gold chain and fob, gross weight 57.6g, in original leather case of issue from H. Pidduck & Sons, Ltd., Hanley.

£1,800-2,200

137



A THOMAS RUSSELL & SON GOLIATH SILVER POCKET WATCH AND CHAIN

TOGETHER WITH ANOTHER With black roman indices and outer minute track, sub seconds dial at 6 o'clock position, gilt hands, plain polished silver case, hallmarked to rear cover, stem and bow, Birmingham 1944 with sponsor's mark W.E., brass 3/4 plate, Swiss 15 jewel lever movement, case diameter 60mm, gross weight 195.3g, together with another silver pocket watch by H.E. Peck, London, Swiss Made, with black roman indices, outer minute track, sub seconds dial at 6 o'clock position, gilt hands, engine turned case back with strap work and escutcheon decoration to rear which hinges to reveal inner cover with two winding apertures behind which is a three quarter plate unsigned movement with cylinder escapement, case internally stamped with Swiss marks and 0.935, case diameter 50mm, gross weight 99.0g, together with silver watch chain, hallmarked Birmingham 1900, gross weight 34.2g and two keys (5).

£120-140

138



A LADIES 18CT GOLD HALF HUNTER POCKET WATCH BY J.W. BENSON.

Outer cover with blue enamel Roman numerals and inner chemin de fer chapter ring around the circular glazed aperture, white enamelled dial with Roman numerals, subsidiary seconds and blued hands, plain polished 18ct yellow gold case, hallmarked to front and rear covers, stem and bow, London 1911 with sponsor's mark J.W.B., front loading gilt three-quarter plate crown wind movement with hand setting button at 4H, signed JW Benson 62&64 Ludgate Hill, London No. 4201 BEST LONDON MAKE BY WARRANT TO H.M. THE LATE QUEEN VICTORIA, one piece case, case diameter 38mm, gross weight 44.7g.

£800-1,200

Fine Jewellery & Watches, 18th Sep, 2025 11:00

139



AN EDWARDIAN 9CT GOLD OPEN FACED POCKET WATCH BY THOMAS RUSSELL AND SONS, LIVERPOOL Retailed by Street & Co., Newcastle-on-Tyne, Watchmakers to the Admiralty, hallmarked to rear and dust cover and stem, Chester, white enameled dial with Roman numerals, subsidiary seconds and blued hands, foliate chased case edge, Swiss seventeen jewels movement, case diameter 53mm, gross weight 103.6g.
£600-800

140



A 9CT GOLD OPEN FACED "EVERITE" NON MAGNETIC POCKET WATCH FROM H. SAMUEL, MANCHESTER With black roman indices and outer minute track, sub seconds dial at 6 o'clock position, gilt hands, plain polished 9ct Dennison yellow gold case, hallmarked to rear cover, stem and bow, Birmingham 1951 with sponsor's mark A.L.D., brass 3/4 plate, Swiss 15 jewel lever movement, case diameter 50mm, gross weight 76.6g.
£500-700

141



A COLLECTION OF SILVER AND GOLD PLATED POCKET WATCHES A collection of silver and gold plated pocket watches, including a Waltham gold plated hunter pocket watch, the case of plain design; a Victorian silver open face pocket watch, the movement signed 'T Fattorini', case hallmarked Chester 1895; a late Victorian silver open faced pocket watch, the dial inscribed 'Russells Ltd of Liverpool', hallmarked Birmingham 1897; a ladies continental silver fob watch; a base metal hunter pocket watch; a gold plated ladies fob watch on chain; and a white metal double watch chain (6).
£100-200

142



A VICTORIAN CHESTER HALLMARKED 22CT GOLD OPEN FACED POCKET WATCH Hallmarked to rear and dust cover, stem and bow, Chester, 1895, by James Richardson of Coventry, white enameled dial with Roman numerals, subsidiary seconds and blued hands, with armourial engraved on the back of the case, Swiss seventeen jewels movement no. 71855, case diameter 54mm, gross weight 142.8g.
£2,500-3,500

143



A CARTIER PANTHÈRE QUARTZ WRISTWATCH, REF. 166920. The signed circular dial with roman numeral markers, quartz movement within a stainless steel and 18ct gold case, case diameter 24mm.
£800-1,200

Fine Jewellery & Watches, 18th Sep, 2025 11:00

144



A 1980S STEEL AND GOLD ROLEX OYSTER PERPETUAL DATEJUST WRISTWATCH Circa 1986, the circular signed black dial with baton hour markers, date aperture to 3, with fluted bezel and jubilee bracelet, 902***, case diameter 36mm. This model has distinctive features such as, Rolex's signature oyster case which ensures water resistance and 2 stone stainless steel/gold composition. Reference number: 16013
Case material: Stainless steel/gold
Case diameter: 36mm
Dial: Black
Movement/calibre: Automatic 3135
Bracelet: Stainless steel/gold jubilee bracelet
Functions: Date
£2,000-4,000

145



AN 18CT GOLD VACHERON & CONSTANTIN MANUAL WIND WRISTWATCH. The signed gold tone dial with roman numeral and baton markers, signed cal. 466/B manual wind movement numbered 451134 within a signed 18ct gold case bearing Swiss assay marks, numbered 305010, case diameter 24mm, with an unassociated 9ct gold bracelet, hallmarks for Birmingham.
£500-700

146



A 1960S ROLEX OYSTERDATE PRECISION WRISTWATCH, REF. 6694. Circa 1969, the silver signed dial with baton markers, outer minutes track and date aperture to 3, manual wind movement numbered within a stainless steel case, serial no. 2236637, with oyster bracelet and folding clasp, case diameter 35mm.

£1,000-1,500

147



† AN 18CT GOLD OMEGA 'MUSEUM COLLECTION' AUTOMATIC WRISTWATCH, REF. 5704.60.02. Limited Re-Edition of the 1948 Centenary, Collector's Series No. 5. 0256/1948. The signed rose gold dial with baton marker, inner track and subsidiary seconds dial to 6, signed cal. 2202 33 jewel automatic movement numbered 80805***, within an 18ct rose gold case bearing Swiss assay marks, numbered 1672004, to the brown leather strap with maker's 18ct gold buckle, case diameter 36mm. With maker's box/presentation case, limited series certificate, cards, booklet and parts from a service conducted in 2017. Paperwork for service also with lot.
£3,000-4,000

Fine Jewellery & Watches, 18th Sep, 2025 11:00

148



AN EARLY 20TH CENTURY PLATINUM DIAMOND COCKTAIL WATCH BY ELDOR WATCH CO. The rectangular dial with Arabic markers, signed manual wind movement within a case stamped 'All Platinum,' set throughout with single and old cut diamonds, and similarly set sides, to the later white metal bracelet and folding clasp stamped 9ct, case diameter 15mm, gross weight 21.8g.
£200-300

149



A Cased OMEGA LADIES COCKTAIL WATCH AND ANOTHER UNBRANDED LADIES COCKTAIL WATCH The cased Omega and unbranded ladies cocktail watch, both with manual wind movement, the omega is fully hallmarked and stamped 375, NK sponsor mark, assayed in London, gross weight: 14.57g. Watch (2) No hallmark visible, stamped 375, gross weight: 20g
£350-450

150



A LADIES 9CT GOLD ETERNA MATIC WATCH

The Eterna Matic ladies manual wind watch with a champagne dial on a woven integral bracelet, serial number: 575657362, both the inside case and the bracelet is fully hallmarked, assayed in Sheffield, stamped 375, gross weight: 35g
£600-800

151



A BUECHE GIROD 18CT GOLD WATCH AND BRACELET

With rectangular face, black Roman numeral hour markers, snap-on back with winding crown and numbered 7725 86272 with tapered textured integral bark finished bracelet terminating in a slide action clasp with fold over safety clip, bracelet stamped with maker's mark 'RCK' for Roy Cecil King and London hallmarks for 1967, case diameter 22mm, overall length 18cm, weight 66.3g.

All watches are sold **as is** and without warranty. Any comments regarding condition reflect the watch's state at the time of cataloguing only and may no longer be accurate at the time of sale or delivery. Buyers should assume that all watches will require servicing before being considered functional or reliable. Watches have not been tested for accuracy, power reserve, or water resistance.

£1,000-1,500

152



A LADIES GOLD PLATED GUCCI WRISTWATCH

A ladies gold plated Gucci wristwatch, mother of pearl dial, square case, integral bracelet strap, boxed.
£50-100

Fine Jewellery & Watches, 18th Sep, 2025 11:00

153



A LADIES CORAL CARTIER TANK WATCH

The diamond and gold-plated silver ladies Cartier tank watch, designed in Cartier's trademark red coral colour and fitted onto a leather after market strap, with a stainless steel buckle and clasp, serial number: 3047345, gross weight: 9.85g.

£700-1,000

156



A GENTLEMAN'S GOLD PLATED TISSOT SEASTAR AUTOMATIC WRISTWATCH

A gentleman's gold plated Tissot Seastar automatic wristwatch, circular champagne dial with baton indicators and subsidiary date aperture, 34mm case, leather strap

£40-60

154



A LADIES 9CT GOLD TISSOT MANUAL WIND WRISTWATCH.

The square dialed, manual wind, ladies Tissot in 9ct white gold, with a belt-like bracelet, also composed of 9ct white gold, full hallmark visible, OWC sponsor mark, stamped 375, assayed in Sheffield, gross weight: 22.88g

£200-300

157



A GENTLEMAN'S YELLOW METAL OMEGA CONSTELLATION AUTOMATIC WRISTWATCH

A gentleman's yellow metal Omega Constellation automatic wristwatch, circular champagne dial with baton indicators, subsidiary date aperture, original Omega glass, 34mm case, leather strap

£300-500

155



A COLLECTION OF THREE GENTS WATCHES

Two Armani watches with rectangular dials and differing strap/bracelet materials, a Seiko automatic watch, fastened to a steel jubilee bracelet, serial number: 104867, model number: 7S26-0540 (3).

£40-60

158



Fine Jewellery & Watches, 18th Sep, 2025 11:00

A GENTLEMAN'S BREITLING CHRONO COCKPIT STAINLESS STEEL AND YELLOW METAL AUTOMATIC WRISTWATCH

A gentleman's Breitling Chrono Cockpit stainless steel automatic wristwatch, blue circular dial with Roman numerals, subsidiary date aperture and three subsidiary gold dials, illuminating hands and hour markers, rotating bezel, case approximately 40mm, reference number B133582/C679, serial number 2212864, purchased 2010, boxed with paperwork and spare link
£700-900

161



A GENTLEMAN'S GOLD PLATED TISSOT SEASTAR AUTOMATIC WRISTWATCH

A gentleman's gold plated Tissot Seastar automatic wristwatch, circular silvered dial with baton indicators, 32mm case, leather strap
£50-80

159



A GENTLEMAN'S YELLOW METAL OMEGA CONSTELLATION AUTOMATIC WRISTWATCH

A gentleman's yellow metal Omega Constellation automatic wristwatch, circular champagne dial with baton indicators, subsidiary date aperture, original Omega glass, 36mm case, leather strap, boxed
£300-500

162



GENTS VINTAGE 1960'S BREITLING NAVITIMER CHRONOGRAPH STEEL WATCH ON LEATHER STRAP

Black and steel dial, three subsidiary dials, chronograph function buttons above and below crown, steel back stamped 'Breitling' to centre and '806' with serial number 1352914, with 806 seventeen jewel winding Swiss chronograph mechanical movement, case size 41mm, black leather strap, steel Breitling buckle, complete with original box and papers.
£1,500-2,500

160



A GENTLEMAN'S YELLOW METAL OMEGA DE VILLE AUTOMATIC WRISTWATCH

A gentleman's yellow metal Omega De Ville automatic wristwatch, silvered dial, baton indicators and subsidiary date aperture, 36mm case, leather strap; together with a yellow metal Omega wristwatch, 34mm case (2)
£300-400

163



Fine Jewellery & Watches, 18th Sep, 2025 11:00

A 1960S 9CT GOLD ROLEX PRECISION MANUAL WIND WRISTWATCH, REF. 12865.

The signed cream dial with Arabic markers and outer minutes track, signed cal. 950 17 jewel manual wind movement within a 9ct gold case bearing hallmarks for Birmingham, 1964, numbered 12865 and 337620, with later leather strap, case diameter 33mm.

£1,200-1,500

166



A SILVER 'DECIMAL CHRONOGRAPH' OPEN FACE POCKET WATCH.

The circular dial with Roman numeral markers, unsigned key wound movement, within a silver case bearing hallmarks for Chester, gross weight 137.1g.

£40-60

164



A WORLD WAR TWO ERA GERMAN ARSA WASSERDICHT STOSSGESICHERT WRISTWATCH

With DH (Deutsche Heer - German Army) and serial number 22682 stamped on the back of the steel case (stamped Stahlboden), indicating an officially issued military watch, comprising a black dial with painted Arabic indices, lume dot markers and now largely missing lume inserts to the hands, subsidiary dial at 6, case diameter 35mm, later fabric strap.

£150-200

167



A FOB WATCH

Bow stamped K18, case diameter 35mm, gross weight 32.4g.

£80-120

165



A ZENITH STAINLESS STEEL MILITARY WRISTWATCH

With DH (Deutsche Heer - German Army) and serial number 8381628 stamped on the back of the steel case, indicating an officially issued military watch, circa 1940, comprising a black dial with painted Arabic indices and lume inserts to the later replacement hands, subsidiary dial at 6, case diameter 35mm, no strap.

£200-400

168



Fine Jewellery & Watches, 18th Sep, 2025 11:00

A 9CT GOLD OPEN FACE POCKET WATCH BY THOMAS RUSSELL & SON, LIVERPOOL AND ANOTHER (2) White enamelled dial with Roman numerals, subsidiary seconds and blued hands, plain polished 9ct Dennison yellow gold case, hallmarked to rear cover, stem and bow, Birmingham 1926 with sponsor's mark A.L.D., one piece case with the plated movement hinged at 9 o'clock, Swiss seventeen jewels movement, case diameter 47mm, gross weight 88.3g, together with another gold plated open face pocket watch by Thomas Russell & Son, Liverpool, white enamelled dial with Roman numerals and blued hands, plain polished Dennison gold plated case, case diameter 50mm, gross weight 94.6g (2).
£500-800

169



A VICTORIAN 18CT YELLOW GOLD OPEN FACE POCKET WATCH A Victorian 18ct yellow gold open face pocket watch, circular white enamel dial with Roman numerals, outer chapter ring and Arabic numerals, 50mm case, movement inscribed 'J. Brownbill 6 Prussia Street Liverpool 56222', case hallmarked Chester 1868, outer case with engine turned design and vacant cartouche, total gross weight approximately 104.7g.
£800-1,000

170



A VICTORIAN SILVER HUNTER POCKET WATCH A Victorian silver hunter pocket watch, engine turned case, circular white enamel dial with Roman numerals, approximately 7.5cm over loop, together with a silver graduated curb link double watch chain, approximately 36cm long, total combined gross weight approximately 147.4g
£50-80

171



AN 18CT GOLD OPEN FACE FOB WATCH BY J. HILLO, NEWCASTLE The gold tone dial with roman numeral markers, key wound movement signed and numbered 22817, within an 18ct gold case bearing hallmarks for London, 1865, case diameter 41mm, gross weight 51g.
£1,000-2,000

172



AN 18CT GOLD HALF HUNTER POCKETWATCH BY FAVRE LEUBA, BOMBAY The dial signed 'Favre Leuba Locle' with roman numeral markers, outer minutes track and subsidiary dial to 6, hand wound movement bearing elephant mark and signed Favre Leuba & Co Bombay, numbered 46915, within an 18ct gold case bearing Swiss assay marks and elephant logo, case diameter 45mm, gross weight 80.4g. With maker's fitted case.
£1,500-2,500

Fine Jewellery & Watches, 18th Sep, 2025 11:00

173



† AN 18CT ROSE GOLD ROLEX OYSTER PERPETUAL DAY-DATE CHRONOMETER WRISTWATCH WITH BOX AND CERTIFICATES

The gents 18ct rose gold Rolex day-date 36 chronometer watch fitted with a black dial, twin lock crown, Arabic numbers and a smooth bezel with a cyclops lens to allow easy reading of the date, a clear white day-complication located at 12 o'clock, fitted with an oyster perpetual bracelet, also made of 18ct gold, gross weight: 172.2g
reference number: 118205

Case material: 18ct rose gold (Ever rose)

Bracelet material: 18ct rose gold (Ever rose)

Movement: Automatic - 3155 calibre

Jewels: 31 Jewels

Case: 18ct rose gold

Dial: Black

The bracelet and case back is stamped "18k" and "750" with its expected Swiss Hallmark.

Gross weight:

£10,000-15,000

174



† ULYSSE-NARDIN MAXI MARINE DIVER WRISTWATCH WITH BOX AND CERTIFICATES

The limited edition Ulysse Nardin "Blue Surf" maxi marine automatic divers watch (no 284), featuring in a deep oceanic blue and 18ct yellow gold, the contrasting glow is reminiscent of the dappled reflection of sunlight from the oceans surface, fitted onto a hefty rubber and 18ct gold strap, the oscillating disk is stamped 22ct.

It features a distinctive blue, wave-like pattern on the dial, baton minute markers and incorporates marine-inspired motifs into its design, such as an anchor and wave emblem and a porthole-esque cyclops lens.

The dial shows a power reserve indicator at the 12 o'clock position and a small seconds subsidiary dial at 6 o'clock, both of which are imperative complications to feature on a divers watch that can resist the pressure of 200m depths.

Last date of purchase: 12.10.2007

reference number: 266-36

Calibre/movement: UN26-34075

Case diameter: 43mm

Case material: 18ct yellow gold

Strap material: Rubber

Glass: Sapphire crystal

A full hallmark is visible on the lugs of the watch.

Stamped 750, UN sponsor mark, Gross weight:

£5,000-8,000

175



Fine Jewellery & Watches, 18th Sep, 2025 11:00

A GENTLEMAN'S LIMITED EDITION VALOUR SOPWITH AVIATOR WRISTWATCH "Always Above, Seldom On The Same Level, Never Underneath".

177

The Valour Sopwith Aviator is an English-designed, Swiss-made aviation watch, set into a steel case and Tuscan calf leather strap (with an alternative material and shade). This model is limited to 200 models with this specific one having once been owned by an original founder of the company. No. 27/200.

The case design of the watch resembles the nose of the World War One Sopwith Camel aircraft with its unmistakable rotary engine. The Sopwith Camel, recognised by many as one of the best military aircraft of the time, was the source of inspiration for this unique piece.

The external case is 54mm wide, enclosing an inner case with dial and movement, protected by a sapphire crystal and surrounded by 9 fasteners in the shape of an engine cylinder.

Case diameter: 54mm

Case height: 16.8mm

Case finish: Circular brushed (external surfaces), microblasted (internal surfaces)

Movement: SOPROD A10-2 automatic mechanical movement

Strap: Genuine Italian Tuscan calfskin strap upper, hand-stitched in Austria

Water resistance: 50m

£2,500-3,500

176



TWO SILVER POCKET WATCHES The first with an enamelled dial, Swiss movement, Birmingham 1887 hallmarked case engraved with a floral spray, the second, in need of repair, with a Birmingham 1904 case (2). (Dimensions: The largest measures 7cm high)
£50-80



A SILVER CIGARETTE CASE, CIRCA 1899 By F.White and F.Elma. With the engravings: QueensFerry Chester, full hallmark on the inside of the case, SM&Co sponsor mark, assayed in London, 1899 date stamp, gross weight: 105.5g.

£40-60

178



A WHITE METAL DUNHILL LADIES LIGHTER Of rectangular form, with engine turned detailing and hinged lid, Pat no. 1657352, 2102108, length 5cm.

We are unable to post this item

£40-60

179



A LOUIS VUITTON 'BOITE FLACON' VANITY CASE The maker's monogram leather exterior and monogrammed smooth leather trim, gold toned hardware, lock numbered 1045645, opening to reveal a cream leather interior with internal box and three vachetta leather straps for bottles, serial no. 953970, dimensions 29.5 x 21 x 21cm.

(Dimensions: 29.5 x 21 x 21cm)

£1,500-2,500

Fine Jewellery & Watches, 18th Sep, 2025 11:00

180



A LOUIS VUITTON 'BOITE BIJOUX'

JEWELLERY BOX/CASE The maker's monogram leather exterior and vachetta leather trim with gold toned hardware, opening to reveal a brown leather and velvet lined interior with double tray, serial no. 944022, dimensions 31.5 x 22 x 9.5cm.

(Dimensions: 31.5 x 22 x 9.5cm)

£1,500-2,500